

EFCO EGL6150

Motherboard and Software

Operations Manual



Spooky Tall



Dragon Deluxe



Viva La Jackpot



Big Daddy Bucks



Big Daddy Bucks 2



Big Daddy Games LLC

733 Midway Road
Menasha, WI 54952

bigdaddygames.net

Office: (920) 727-5508

TECH-DIRECT

(920) 850-7409

Calibrating & Screen Settings

Phantom Monitors do have auto adjust in the menu screen or the second button from the left though each monitor might have a different placement depending on the model.

PCAP Monitors DO NOT have MONITOR CALIBRATION option available and are SELF-AUTO CALIBRATED.

Users and Passwords

Game setup is password-protected which varies from levels of User access and permissions. All setup features and options are available to the ADMIN only. The fewest options and most restrictive use are available to the ATTENDANT.

User Level	Password	Recommended Access
ADMIN	000000	Operator Owner
OPERATOR	0000	Operator Management / Staff
LOCATION	2222	Location Owner / Management
ATTENDANT	1111	Location Staff

PERMISSION LEVELS		
ATTENDANT / LOCATION <i>(ATD / LOC)</i>	OPERATOR <i>(OP)</i>	ADMIN <i>(ADMIN)</i>
View Cabinet Info	<i>Plus ATD, LOC</i>	<i>Plus ATD, LOC, OP</i>
View Game Reel History	Edit Cabinet Info	Edit <i>OP</i> Password
View Game Jackpot History	Edit <i>ATD</i> Password	Edit <i>ADMIN</i> Password
Edit Game Reel Speeds	Edit <i>LOC</i> Password	Edit Books Meters
Edit Game Volume	Edit Game Difficulty Settings	Reset Master Books
Edit Attract Mode Setting	Edit Progressive Settings	Reset Game History
View/Print Books	Edit Jackpot Settings	
Re-Print Prize Tickets	Edit Printer Settings	
	Reset Period Books	
	Edit Display Settings (Dollars, Cents, Credits, etc.)	

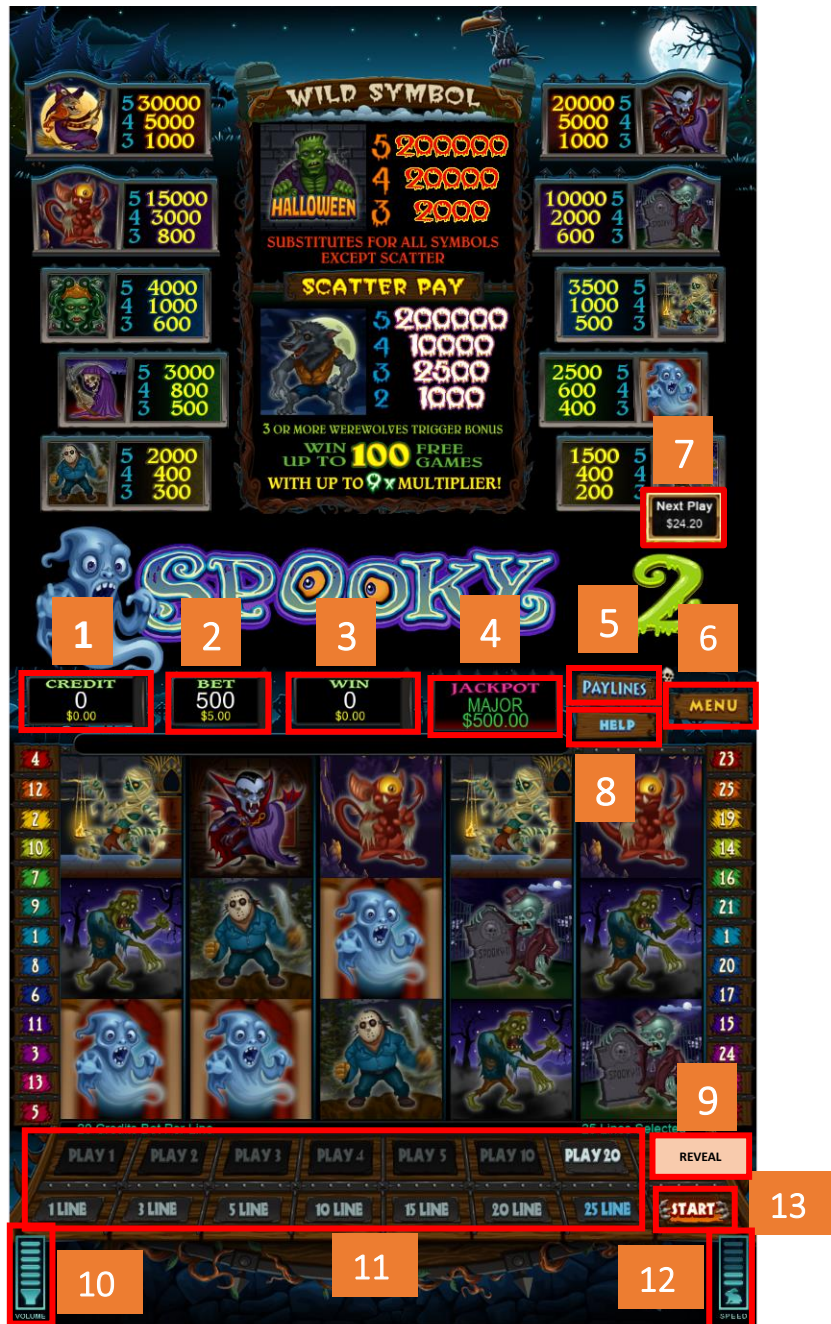
Table of Contents

Software Game Interface	1
Main Cabinet Settings Menu.....	3
Network Settings.....	4
Setting up Progressive Server.....	5
Global Settings.....	6
Game Settings	9
Save Data (Factory Reset).....	9
Skill Plus Game Feature Settings	10
Mandatory Preview.....	10
Skill Wheel.....	11
Follow Me.....	12
Cabinet Info	13
Bookkeeping.....	14
Role Manager	15
Game History.....	16
EFCO EGL-6150 External Ports	17
EFCO 72-Pin Dual Edge Jamma Diagram	18
M.2 SSD Instructions for Changing Drives.....	20
With Phillips Screwdriver	20
With M.2 Clip	21
Bill Validator Instructions	22
Convert BV50 from PULSE to SERIAL Mode	22
Convert ICT PA7 from PULSE to SERIAL Mode	22
Operator Menu – Serial Bill Validator	22
Printer Instructions	23
Setting Phoenix Printer to SERIAL Mode.....	23
Setting Phoenix Printer to print QR Codes.....	24

Software Game Interface

Note that this game interface varies from other Software Title

1. Player Credits Player Help Menu
2. Player Bet Amount
3. Game Payout Amount
4. Current Random Jackpot Values
Note this display varies on other software titles.
5. View Game Paylines
6. Return to Lobby Screen
7. Mandatory Reveal (if enabled in Settings)
8. View Game instructions
Note this display varies on other software titles.
9. Reveal (if enabled in Settings)
10. Game Volume Settings
11. Bet Level Selector
Note this display varies on other software titles.
12. Reel Speed Settings
13. Start Game Reel



User Login



Game setup is password-protected which varies from levels of User access and permissions. All setup features and options are available to the ADMIN only. The fewest options and most restrictive use are available to the ATTENDANT.

USER LOG-IN, hit the **Operator Switch** to pop-up the PIN Prompt.

User Level	Password	Recommended Access
ADMIN	000000	Operator Owner
OPERATOR	0000	Operator Management / Staff
LOCATION	2222	Location Owner / Management
ATTENDANT	1111	Location Staff

Main Cabinet Settings Menu



Options available for each Users (ADMIN shown, reference User Login for user access restrictions).

1. Reset Icon to restart the Game
2. Shut Down Icon to shut down the Game

PERMISSION LEVELS		
ATTENDANT / LOCATION <i>(ATD / LOC)</i>	OPERATOR <i>(OP)</i>	ADMIN <i>(ADMIN)</i>
View Cabinet Info	Plus ATD, LOC	Plus ATD, LOC, OP
View Game Reel History	Edit Cabinet Info	Edit <i>OP</i> Password
View Game Jackpot History	Edit <i>ATD</i> Password	Edit <i>ADMIN</i> Password
Edit Game Reel Speeds	Edit <i>LOC</i> Password	Edit Books Meters
Edit Game Volume	Edit Game Difficulty Settings	Reset Master Books
Edit Attract Mode Setting	Edit Progressive Settings	Reset Game History
View/Print Books	Edit Jackpot Settings	
Re-Print Prize Tickets	Edit Printer Settings	
	Reset Period Books	
	Edit Display Settings (Dollars, Cents, Credits, etc.)	

Network Settings



- **Progressive Enabled:** Enable/Disable Progressive
- **Game Number:** Edits last digits "X" of Progressive Server IP Address **10.4.2.X** (Needs to be between 11 and 255)
- **Progressive Game Name:** Edit Progressive Game Name Display
- **Progressive Prizes to Meters Enabled:** Enable/Disable Progressive Prizes to Meters. Tracks progressive prize ticket dollar value to be added to the hard meter out values
- **Connection Status:** Progressive Connection Status

***Note that when REVEAL is TURNED ON, the PROGRESSIVE WILL TURN OFF. To keep PROGRESSIVE ON, REVEAL OPTION must be OFF!**

Setting up Progressive Server

ADMIN is the only user login who can setup Progressive.

1. Logged in as ADMIN, press the **Network Settings**. Progressive screen should appear as below.



2. **CHANGE** the **Game Number**, pick a number between 11 and 255 (This will change the last digits "X" of the IP Address 10.4.2.X.)
 - a. **PLEASE WAIT 30 SECONDS FOR THE IP ADDRESS TO BE ADDED**
3. **Progressive Game Name** should match IP Address or be different from the other games
 - Game 1 = Game01
 - Game 2 = Game02
 - Game 3 = Game03
4. *Optional Progressive Prize to Meters Enabled* to enable Progressive Prizes to tick Hard Meter Out.
5. Press **Progressive Enabled** when **Client IP Address** and **Progressive Game Name** entries are completed.
6. Connection Status should update to **CONNECTED**.

Progressive Setup is **COMPLETED**.

7. If Connection Status **is not** CONNECTED, swap the CAT5 cable to the second ethernet port and reboot. If necessary, repeat steps 1-6 again.

Global Settings



Audio

- Edit Master, Music, SFX, Symbol, Win, and Coin Volumes
- Attract Mode Sound Enabled (**Default: Disabled**)

Display

- Credit Display (**Default: Dollars**)
- Difficulty Setting (**Default: 3**)
- Attendant Clear (**Default: Off**)
- Mouse Cursor Enabled (**Default: Disabled**)
- Maximum Single Win (**Default: \$2500**)
- Maximum Machine Credits (**Default: \$3500**)
- Cents Redeemed Enabled (**Default: Disabled**)
- Clear Cents Remaining Enabled (**Default: Enabled**)
- Minimum Feature Bet Amount (**Default: \$0.50**)
- Maximum Player Bet Amount (**Default: \$5.00**)

EFCO Software Operations Manual

Monitor

- Open Monitor Configuration Tool (This feature no longer works see calibration and screen settings)

Printer

- Serial Printer Enabled (**Default: Disabled**)
- Printer Type (**Default: Pyramid**)
- Printer Port Number (**Default: COM2**)
- Maximum Ticket Out Enabled (**Default: Disabled**)
- Maximum Ticket Out Value (**Default: \$2500**)
- Refund Ticket Enabled

Bill Validator

- Serial BV Enabled
- Allow BV Pulses (**Default: Disabled**)
- Serial BV Type (**Default: ICT PA7**)
- Serial BV Port Number (**Default: COM1**)
- Status & Connect Button

Bet Levels

- \$0.25 to \$5.00 Bet Enabled (**Default: Enabled**)

Spooky Tall

Note that this setting is only available for the SPOOKY TALL software

- Spooky 2 Startup
- Spooky Cash Startup
- Spooky Platform Startup
- Spooky 2 *Crow Bonus* Enabled

Power Player

Note that this setting is now only available for the **Big Daddy Bucks 2** software

- Enables Buy-A-Feature where Players can choose their multiplier and instantly purchase either the Free Spins or Deluxe Feature
 - Reveal will be disabled after enabling this option

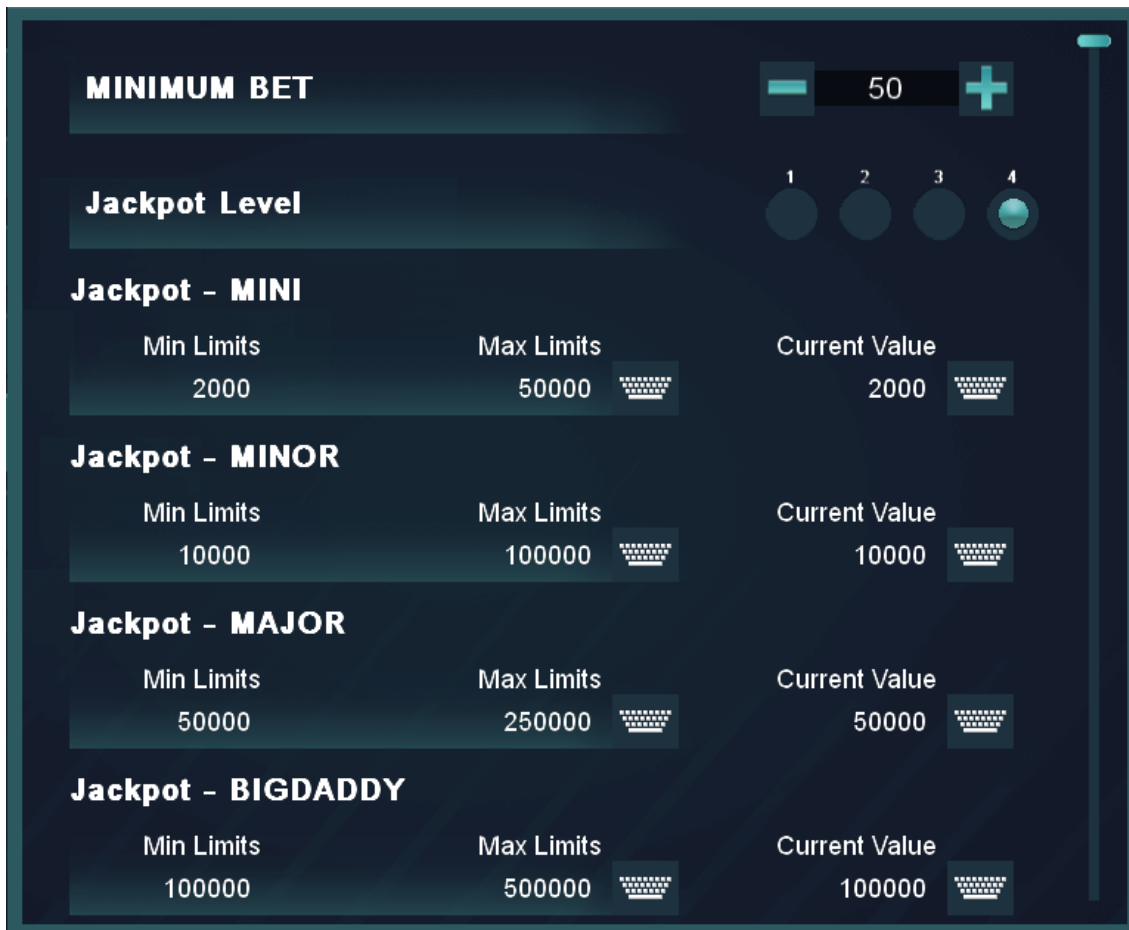
EFCO Software Operations Manual

Jackpots

- Minimum Jackpot Bet
- Jackpot Level Settings 1 – 4 (**Default: 3**)

Level	1	2	3	4
<i>Mini</i>	5 – 20	10 – 40	20 – 80	20 – 1500
<i>Minor</i>	25 – 100	50 – 200	100 – 500	100 – 2000
<i>Major</i>	125 – 250	250 – 500	500 – 1125	500 – 3500
<i>Big Daddy</i>	250 – 500	500 – 1000	1000 – 2000	1000 – 4000

***Level 4 Jackpot has customizable set Max Limits pictured below**



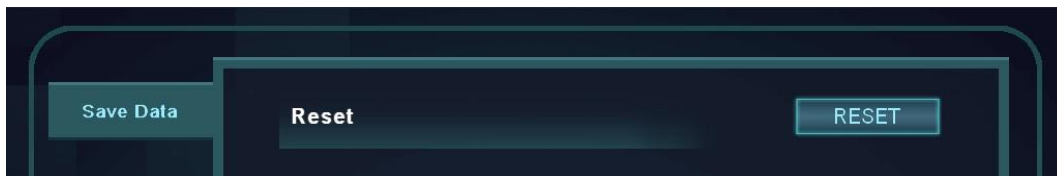
Values shown in **CENTS** (No Decimal)

Game Settings

- ENABLE or DISABLE games in the game pack.

Save Data (Factory Reset)

ADMIN ACCESS only



- Resets Software settings to DEFAULT **AND** ZEROES out ALL BOOKS, GAME HISTORY entirely.

SOFTWARE SWAP NOTE

Follow the Save Data Reset prompts on the existing software **BEFORE** installing the new software to avoid having any potential save setting issues with the new software being installed.

Skill Plus Game Feature Settings

Located in **Global Settings**. Big Daddy Games offers;

- Reveal / Best Play
- Mandatory Preview
- Skill Wheel
- Follow-Me

Reveal / Best Play

Enables the REVEAL button to appear in the Game where Players may scroll through the bet denomination and press the REVEAL button to reveal the next spin outcome.

Mandatory Preview

Mandatory Preview displays a box in the top or bottom monitor corner screen on each game showing the NEXT PLAY. The NEXT PLAY shows the EXACT OUTCOME of the very NEXT SPIN for EACH PLAY LEVEL on each Game.





Skill Wheel

Players must start the Skill Wheel to begin the spin wheel for points accumulated during play. Player must dexterously touch the Skill Wheel to stop the wheel from spinning while also landing on the most desirable outcome. Player collects points where the Skill Wheel had landed. Multiple chances to spin the Skill Wheel to collect up to 100% points.

- Skill Wheel Enabled (**Default: Disabled**)

- Skill Wheel Maximum Spin Amount (**Default: \$50.00**)
 - Denom number of points Player can collect per spin.
 - i.e. If Player has 100 points to collect with \$50.00 setting, the spin count will be 2 which gives the player 2 chances to collect points won.

- Bonus Game Enabled (**Default: Disabled**)
 - Bonus game after the Skill Wheel is played. Will print a second Skill Report for Player to fill out and submit for current contest.

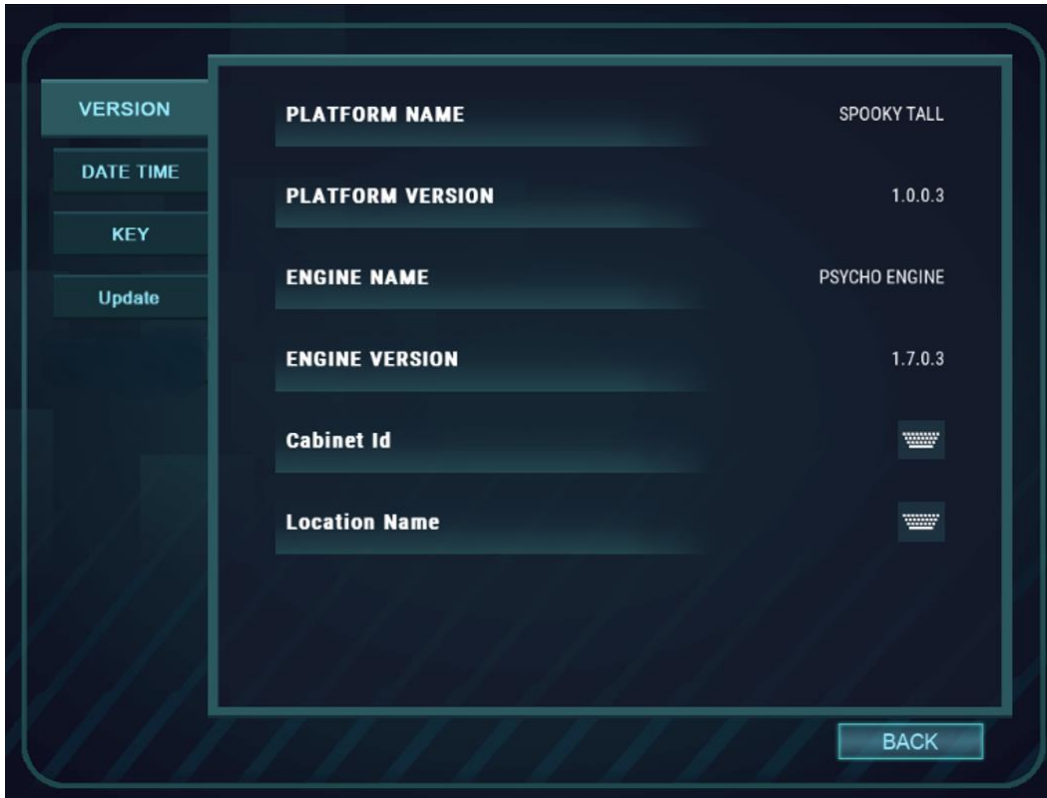
Follow Me

Follow-Me features game symbol images that will ENLARGE during the “My Turn” phase. During the “Your Turn” phase, in a TEST OF SKILL, the Player will attempt to repeat the same pattern by touching the images in SKILLFUL SUCESSION.



- Steps Count (**Default: 13**)
 - Number of Steps Players must complete win
- Pattern Speed (**Default: 10**)
 - Speed of the Pattern
- Pauses Enabled (**Default: OFF**)
 - Timed pauses will be set between rounds
- Pause Every N Steps (**Default: 3**)
 - Number of steps before pauses inserted
- Pause Length – Seconds (**Default: 8**)
 - Timer when Pause Every N Steps is enabled
- Timer Enabled (**Default: OFF**)
 - Enable / Disable timer of the Follow-Me featured
- Timer Length – Seconds (**Default: 10**)
 - Seconds set for Timer Enabled
- Exit Button Enabled (**Default: ON**)
 - Allows Player to exit the Follow-Me feature without completing
- Total Loss Only Enabled (**Default: ON**)
 - Follow-Me optional feature will only appear if Player’s spin results in a loss
- Win Percentage (**Default: 104%**) (**Range 100-200**)
 - Percentage of bet Player can receive back after completing the Follow-Me feature

Cabinet Info



Platform Version

- Platform Version is the Game's version number

Cabinet ID

- Editable field that prints on Tickets and Books Cabinet info

Location Name

- Editable field that prints on Tickets and Books Location info

Date Time

- Editable field that prints on Tickets and Books Date/Time info

Key

- Non-editable field that states current BDG License Key installed and expiration date of License Key

Update

- Performs updates through a USB flash drive

Bookkeeping

	Master	Period
TOTAL NUMBER OF BETS	0	0
TOTAL MONEY BET	\$0.00	\$0.00
AVERAGE BET	\$0.00	\$0.00
TOTAL MONEY WON	\$0.00	\$0.00
SPINS LOST MINUS WON	0	0
MACHINE PAYBACK %	0%	0%
TOTAL SPINS	0	0
TOTAL SPINS WON	0	0
SPINS WON %	0%	0%
LONGEST WINNING STREAK	0	0
TOTAL SPINS LOST	0	0
SPINS LOST %	0%	0%
LONGEST LOSING STREAK	0	0

Print Books BACK

View Master and Individual Game Books

CLEAR PERIOD / MASTER BOOKS

- In the **ALL** tab, you can use the scroll bar on the right to scroll down to Clear Books Period.
- Note that only ADMIN has access to Clear Master Books.

Meters

ADMIN ACCESS only

- Enter in starting Cabinet Hard Meters and reconcile with physical hard meters.

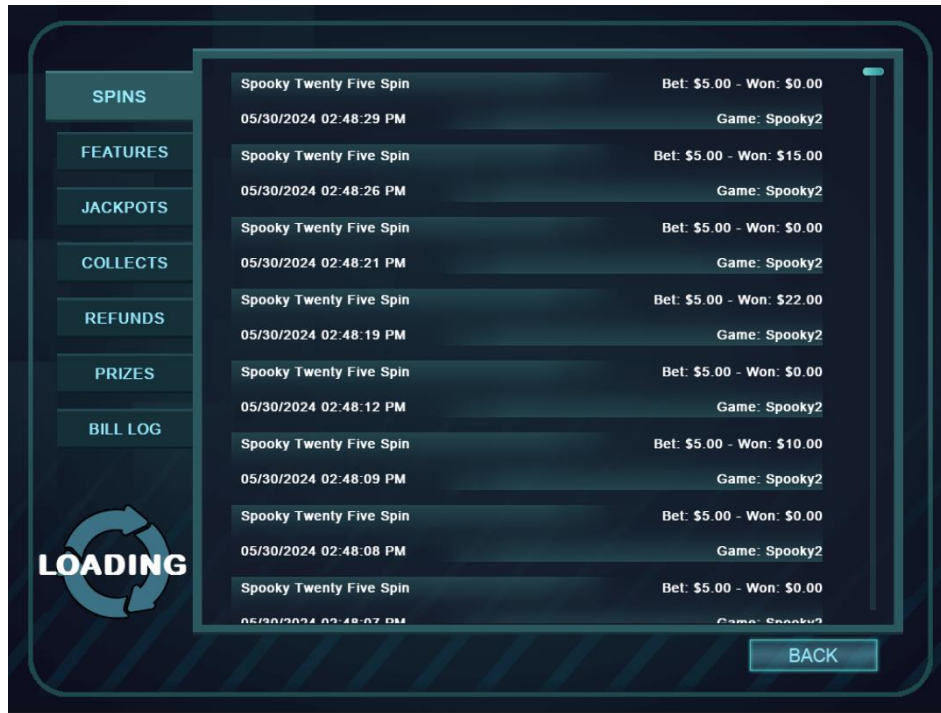
Role Manager



Change each User's passwords

- Change passwords for each user account
- Big Daddy Games is unable to recover and personalized password so a new Software replacement will be needed

Game History



Spins

- History of up to 100 of the latest Player spin results

Features

- History of up to 25 of the latest Feature dollar amount and Feature spin result won

Jackpots

- History of up to 25 of the latest Random Jackpots Won

Collect

- History of up to 10 of the latest Ticket Redemption amounts

Refunds

- History of up to 10 of the latest Refunded tickets

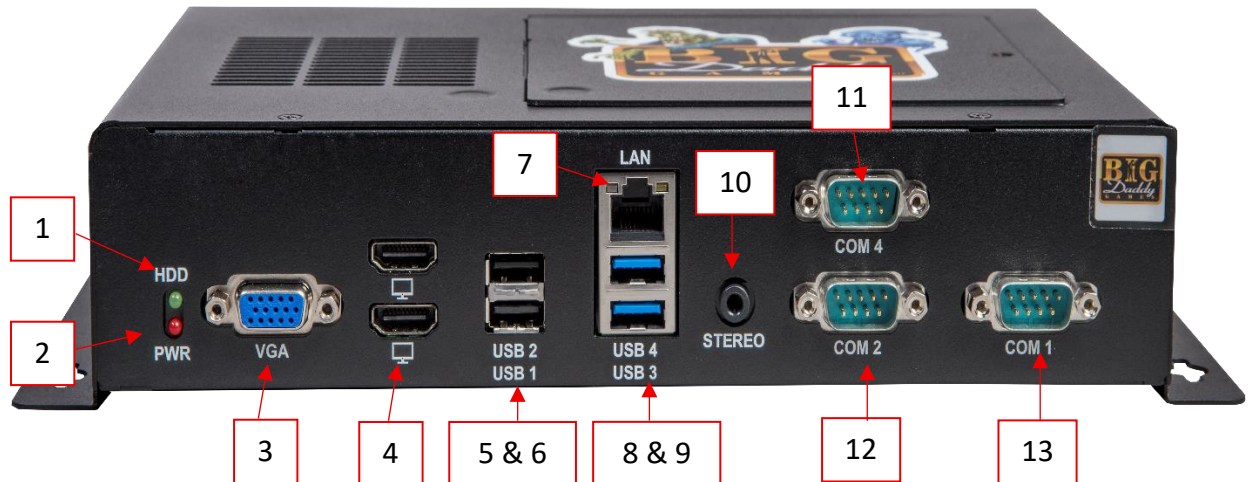
Prizes

- History of up to 10 of the latest Progressive Prize Tickets won

Bill Log

- History of up to 1,100 of the latest Bill denominations inserted into the BV

EFCO EGL-6150 External Ports



1.	HDD	Green Light indicating M.2 drive is operating normal
2.	PWR	Red Light indicating Board is receiving normal Power
3.	VGA	Not used
4.	HDMI Port	Monitor connectivity
5.	2.0 USB 1	Extra USB 2.0 port
6.	2.0 USB 2	Extra USB 2.0 port
7.	LAN	For connecting Progressive System
8.	3.0 USB 3	Monitor USB Touch Cable
9.	3.0 USB 4	BDG USB Timed License Key
10.	Stereo	Not used
11.	COM 4	Not used
12.	COM 2	Printer
13.	COM 1	Serial Bill Acceptor

EFCO 72-Pin Dual Edge Jamma Diagram

Component Side	Pin	Solder Side
	1	
	2	
Speaker Right (+)	3	Speaker Right (-)/GND
Speaker Left (+)	4	Speaker Left (-)/GND
	5	
Knockoff	6	
Ticket Out	7	
	8	
Start Switch	9	
Small	10	
Play	11	
Take	12	
Double	13	
	14	
	15	
Big	16	
	17	
Coin A / BV Pulse Switch	18	Key In
	19	Coin C
Record / Books Switch	20	Menu Switch
	21	Key Out / Ticket Switch
	22	
Coin A / Meter In	23	
Meter Credits Played	24	
	25	
Meter Credits Won	26	
	27	
Out Meter	28	
Lamp: Start	29	
Lamp: Small	30	
Lamp: Play	31	Lamp: Count
Lamp: Take	32	
Lamp: Double	33	
Lamp: Big	34	
	35	
GND	36	GND

EFCO 20-Pin Dual Edge Jamma Diagram

Component Side	Pin	Solder Side
GND	1	GND
GND	2	GND
+5V	3	+5V
+5V	4	+5V
+12V	5	+12V
HOP-VCC	6	
TICKET SSR	7	
	8	
GND	9	GND
GND	10	GND

M.2 SSD Instructions for Changing Drives

BEFORE YOU START – **FACTORY RESET** the **SAVE DATA** *ref page 9* on the old Software **BEFORE** you install the new Software.

With Phillips Screwdriver

1. Recommended, but not necessary, remove the 4 square head screws holding the motherboard inside the cabinet.
2. Remove the top cover from the motherboard
3. Remove screw holding the M.2 drive in place. See FIG A. (It helps greatly to have a magnetic screwdriver so the screw does not get lost)
4. The drive will have a bit of spring upward. See FIG B.
5. Insert the replacement drive into the slot. Refer to FIG B.
6. Lightly push down on the drive to get into place. Be careful of the battery and red jumper, it is a tight fit.
7. Replace the screw holding the M.2 drive in place. Refer to FIG A.
8. Replace the motherboard cover. If removed from cabinet, re-mount motherboard into cabinet. Re-connect all cables.

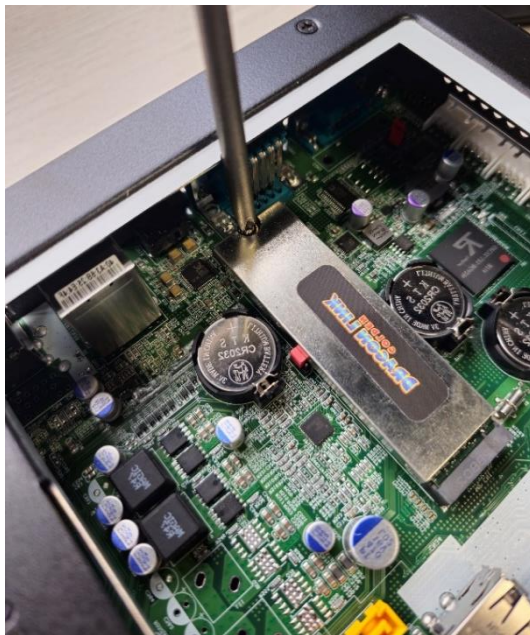


Figure A



Figure B

BEFORE YOU START – **FACTORY RESET** the **SAVE DATA** *ref page 9* on the old Software **BEFORE** you install the new Software.

With M.2 Clip

1. Connect the M.2 clip with the M.2 drive illustrated below.



2. Install the M.2 to the EFCO M.2 port at an angle. Ensure that the **M.2 copper element is completely covered**. Press the M.2 Clip down and connect to motherboard screw pillar, securing in place.



3. M.2 software should be secured as illustrated below.



Bill Validator Instructions

Convert BV50 from PULSE to SERIAL Mode

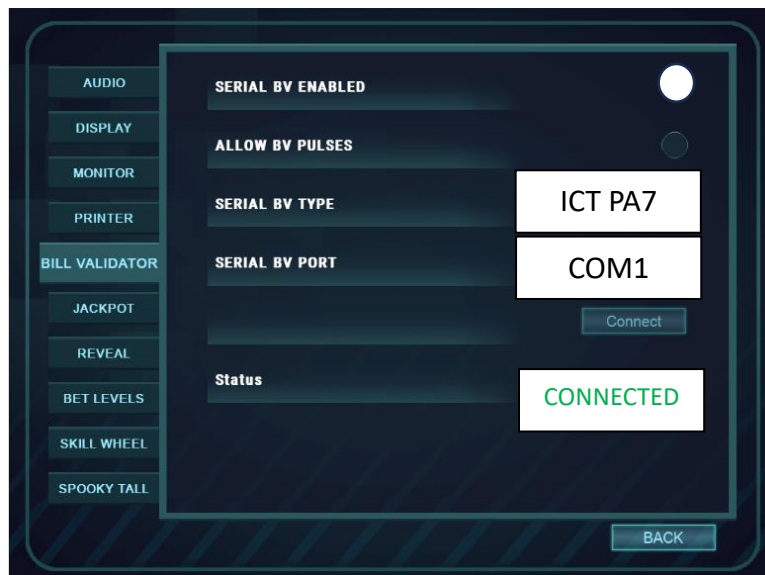
1. On the BV50, open up the unit by pulling the silver latches on the sides
2. Locate the brown push button switch on the circuit board.
3. Press and hold for a fast 8 count then close the unit back up, you should hear the BV power cycle and there should be **NO LIGHTS** on the front when powered on and in SERIAL mode.

Convert ICT PA7 from PULSE to SERIAL Mode

1. Switch all dib switches on the side of the PA7 off (Up Position).
2. Open up the front panel and switch dib switches 3 and 4 off; and 1 and 2 on.
3. Power cycle ICT PA7.

Operator Menu – Serial Bill Validator

1. Connect the BV serial harness to **COM1** EFCO Motherboard
2. In the Operator Menu, go to the Global settings then press Bill Validator
3. Scroll down and enable Serial BV Enabled *ON*
4. Change Serial BV Type to BV Brand connected
5. Change Serial BV Port to **COM1**
6. **Status should read as Connected**
7. Exit settings and power cycle.

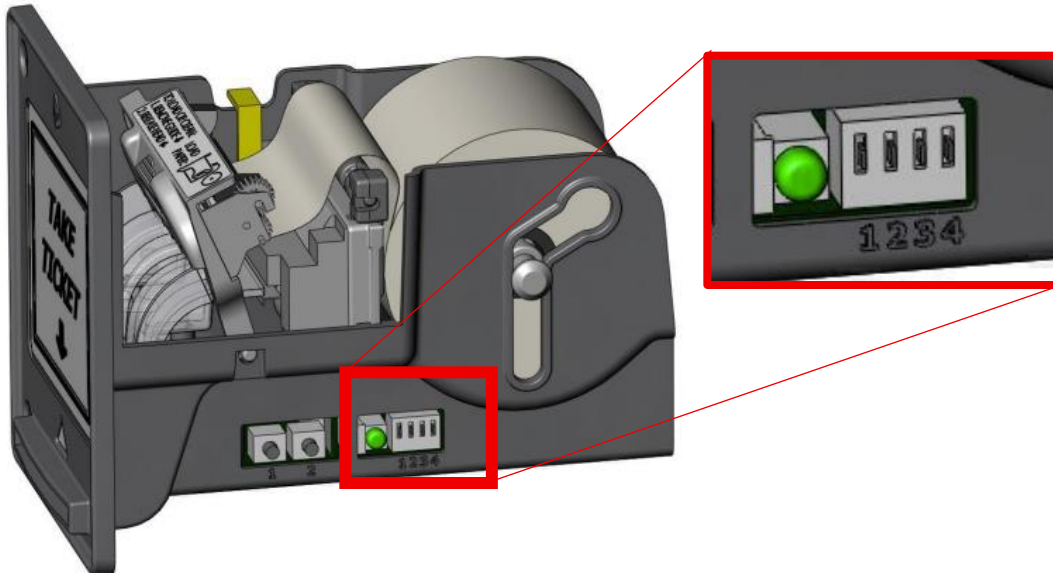


ICT PA7 Bill Validator shown in Global Settings Menu

Printer Instructions

Big Daddy Games is compatible with *Pyramid Technologies Phoenix* Thermal Printer.

For best security, it is highly recommended that the *Phoenix* Printer model *SEN-02* with firmware version is *1.15* in **SERIAL MODE**.



Setting Phoenix Printer to PULSE Mode

DIP Switch 1 must be **ON (DOWN)** and DIP Switch 3 and 4 must be set to **OFF (UP)**.

ON ↓	OFF ↑	OFF ↑	OFF ↑
DIP 1	DIP 2	DIP 3	DIP 4

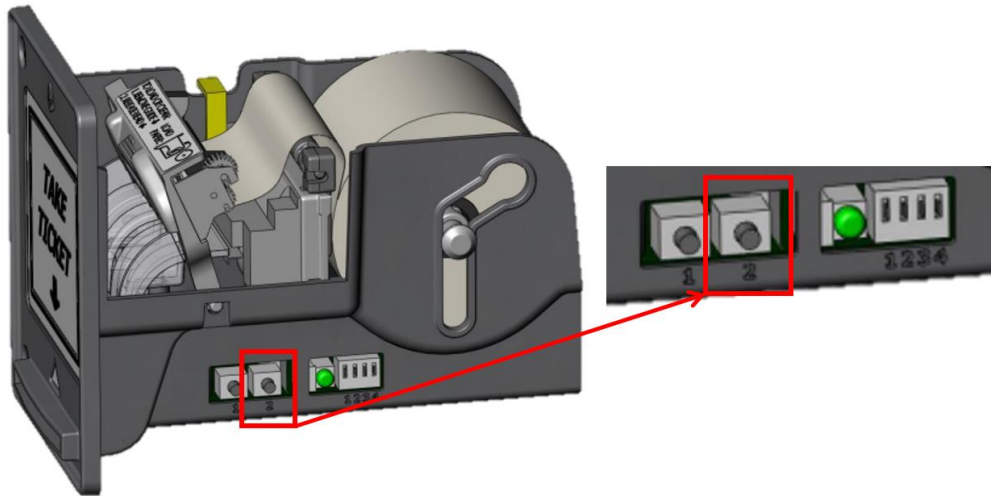
Setting Phoenix Printer to SERIAL Mode

DIP Switch 1 and 3 must be set to **ON (DOWN)**.

ON ↓	OFF ↑	ON ↓	OFF ↑
DIP 1	DIP 2	DIP 3	DIP 4

Setting Phoenix Printer to print QR Codes

Hold in the second button on the Phoenix Printer until a QR code is printed (5-10 seconds). Label the QR code of what Game # the QR code printed from.



Calibrating & Screen Settings

Phantom Monitors do have auto adjust in the menu screen or the second button from the left though each monitor might have a different placement depending on the model.

PCAP Monitors DO NOT have MONITOR CALIBRATION option available and are SELF-AUTO CALIBRATED.

Users and Passwords

Game setup is password-protected which varies from levels of User access and permissions. All setup features and options are available to the ADMIN only. The fewest options and most restrictive use are available to the ATTENDANT.

User Level	Password	Recommended Access
ADMIN	000000	Operator Owner
OPERATOR	0000	Operator Management / Staff
LOCATION	2222	Location Owner / Management
ATTENDANT	1111	Location Staff

PERMISSION LEVELS		
ATTENDANT / LOCATION <i>(ATD / LOC)</i>	OPERATOR <i>(OP)</i>	ADMIN <i>(ADMIN)</i>
View Cabinet Info	<i>Plus ATD, LOC</i>	<i>Plus ATD, LOC, OP</i>
View Game Reel History	Edit Cabinet Info	Edit <i>OP</i> Password
View Game Jackpot History	Edit <i>ATD</i> Password	Edit <i>ADMIN</i> Password
Edit Game Reel Speeds	Edit <i>LOC</i> Password	Edit Books Meters
Edit Game Volume	Edit Game Difficulty Settings	Reset Master Books
Edit Attract Mode Setting	Edit Progressive Settings	Reset Game History
View/Print Books	Edit Jackpot Settings	
Re-Print Prize Tickets	Edit Printer Settings	
	Reset Period Books	
	Edit Display Settings (Dollars, Cents, Credits, etc.)	

Manuals Available Online



Big Daddy Games LLC



Big Daddy Games LLC
733 Midway Road
Menasha, WI 54952

TEL: (920) 727-5508
bigdaddygames.net
sales@bigdaddygames.net

CALL FOR SERVICE

TECH-DIRECT

(920)-850-7409

After Hours of Support Service Calls

Monday – Thursday	4:15 PM	-	8 PM
Friday	3 PM	-	8 PM
Saturday	10 AM	-	6 PM
Sunday	Noon	-	4 PM