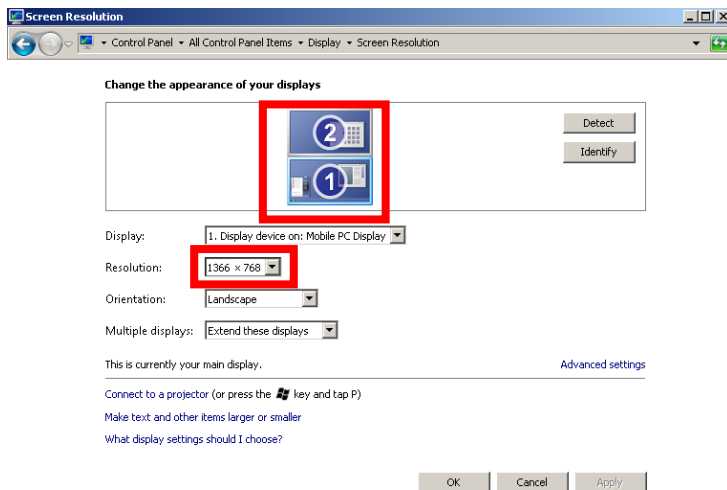
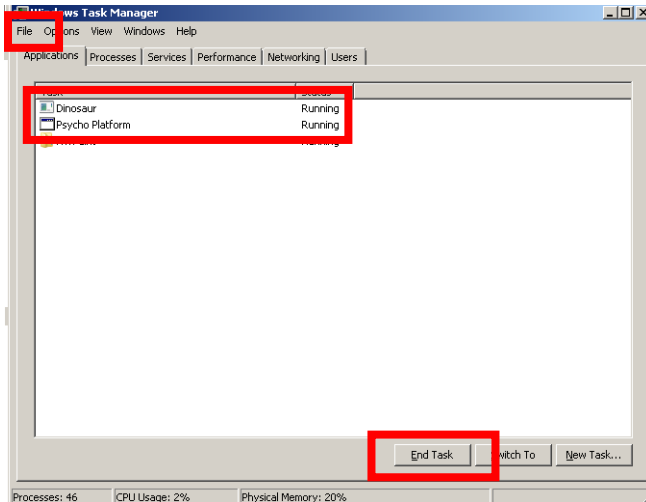


## How to check and change Power Player 3 display settings

1. Open task manager (Ctrl-Alt-Delete) and close the game application using end task button (It will be listed as psycho.exe or dinosaur.exe)
2. In task manager click file, run new task, and type in Control Panel
3. In Control Panel go to Display then select Change Display Settings
4. In the display setting make sure screen 1 is on the bottom and screen 2 is on the top
5. Check that the resolution is at 1366 by 768 for Screens 1 and 2
6. Hit apply and close the window
7. Reboot through Windows or power cycle the cabinet



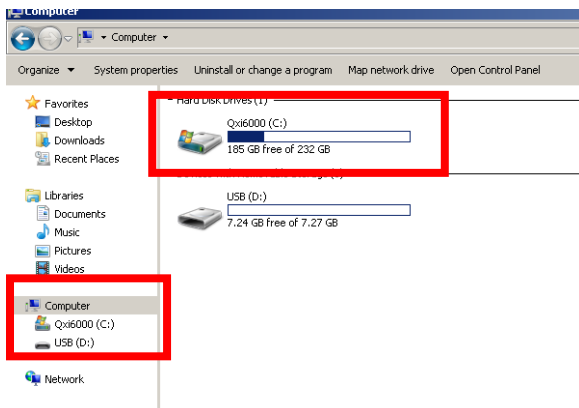
### Display Settings Page



### Task Manager

## How to clear save data on Power Player 3 for Windows version 1.0.0.24 or older

1. Open task manager (Ctrl-Alt-Delete) and close the game application using end task button (It will be listed as psycho.exe or dinosaur.exe)
2. In task manager click file, run new task, and type in explorer
3. Select Computer
4. Select Qxi6000 (:C)
5. Select on psycho
6. Delete the folder called "Savedata"
7. Reboot through Windows or power cycle the cabinet



### Explorer Page