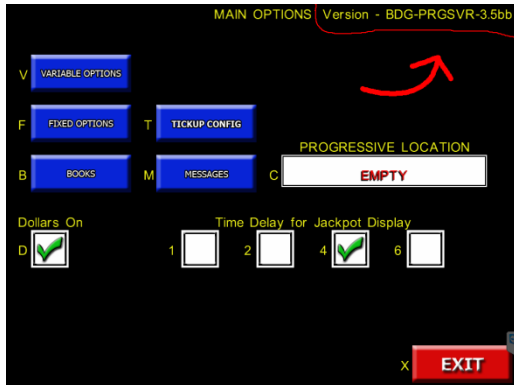


## Restoring Progressive/Big Daddy Bucks Data to New Drive

Any Progressive Drive version prior to 3.5 will need to have all data manually entered into NEW Progressive/Big Daddy Bucks Hard Drive. As that anything prior to version 3.5 is not Big Daddy Bucks and doesn't have a backup flash option anyway, this should not be an issue. With the exception of a few beta test locations, which we know about, this document should cover every other location running Progressive/Big Daddy Bucks.

Steps to Find Version Number:

- 1- With a keyboard connected to the Progressive motherboard and the Progressive display app on screen, press/type in the word 'null'. This should get you into the Main Menu. If 'null' doesn't work, try pressing two 'L' keys and then 'null' again. If it still doesn't work, then it is probable that someone changed the passcode. If you cannot find out what it is, as that we would not have changed it here at Big Daddy, then you will need to enter the information manually into the new Progressive/Big Daddy Bucks drive.



- 2- In the Main Menu Screen you will see the version in the top right. As shown in this image, it is the latest version 3.5bb.

If you have a version 3.5 or later, that is not 3.5bb, follow the steps below to Restore your Progressive/Big Daddy Bucks Server data to a new Progressive/Big Daddy Bucks hard drive.

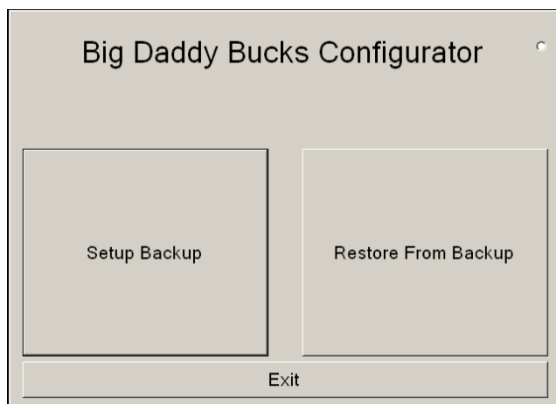
- 1- If the existing drive in the Progressive Server is up and running, it needs to be shut down properly to avoid destroying the data on the thumb drive. Below is the typical data seen in the backup folder on the thumb drive.

Name	Date modified	Type	Size
AD.csv	8/14/2015 10:03 AM	Microsoft Excel C...	1 KB
config.bdg	3/2/2015 10:32 AM	BDG File	1 KB
JackpotDB_20150817.BAK	8/17/2015 9:52 AM	BAK File	1,939 KB
JackpotDB_20150817.ol2	8/17/2015 9:12 AM	OL2 File	1,939 KB
JackpotDB_20150817.old	8/17/2015 9:32 AM	OLD File	1,939 KB
L.csv	8/14/2015 10:03 AM	Microsoft Excel C...	1 KB
phptest_20150817.BAK	8/17/2015 9:52 AM	BAK File	1,619 KB
phptest_20150817.ol2	8/17/2015 9:12 AM	OL2 File	1,619 KB
phptest_20150817.old	8/17/2015 9:32 AM	OLD File	1,619 KB
strings.dat	3/2/2015 10:32 AM	DAT File	1 KB

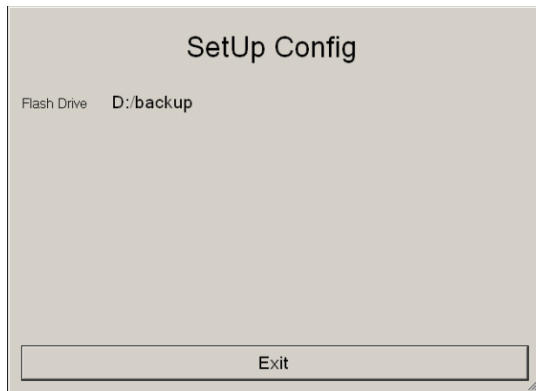
- 2- If you look at the files dates and times, you will see that the .Bak files are the newest, .old the previous one, and the .ol2 the oldest. When the server creates a new .Bak set it will make the .old an .ol2, and the previous .Bak, an .old. This provides three files in case of errors to the latest. If a server has been backing up bad data, then this will not work for you. The Big Daddy Bucks data is in the two .csv files and these should be good for the Big Daddy Bucks data. In that case you would have to replace the .Bak files with either the .old set or the .ol2 set by first deleting the .Bak files and renaming the .old or .ol2 files to .Bak. Then you could run the restore. If the Progressive data is wrong after the restore, you can manually adjust it through the Progressive display server. After entering the 'null' to get to the main menu, you can type 'nilk' which will reset everything to the defaults, but the Big Daddy Bucks data should be fine.
- 3- I recommend copying the backup folder on the thumb drive before continuing, so you have a backup.
- 4- After having the Progressive server down, from the original drive, remove the **USB Hasp SRM Key** and the **Backup USB Thumb Drive** and change the hard drive to the new one. **Also pull out the power wire from the network switch.** We do not want any network communication while we are doing this. These things are very important. Missing one of these steps could prevent the restore from working. Boot the drive. Because we removed the USB Hasp SRM Key, the Progressive Apps will not start, which is what we want. You should see the following on the screen after the boot. Just highlight the 'OK' and press the spacebar, you may have to alt-tab to give this window focus, but it already should.



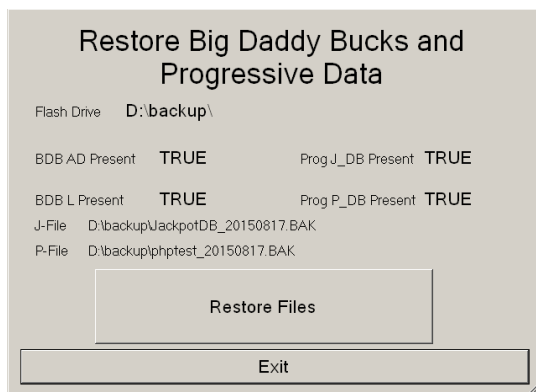
- 5- **Re-Insert the USB Backup Thumb Drive**, an explorer window may open, that's ok. If it does we want to switch to the c:\config folder. It may be easier to open a new one after closing the one that opened from the thumb drive. If you need to open a new one, press the 'window' key and 'e' on the keyboard or go to start and click on computer. Migrate to the 'c:\config' folder. Highlight and run the 'backupCFG.exe' and you should see the dialog box shown below.



- 6- **Highlight Setup Backup** and press spacebar. You should see as below. On my cabinet the **USB Backup Flash Drive** came up as the d: drive, as shown in the dialog, it says 'd:\backup'. Tab till the exit is highlighted and press spacebar returning you to the main page of the backup app as shown in image above.



- 7- **THIS IS IMPORTANT** – From the Main Page, highlight the Exit button and press spacebar. We need to exit the backup app or the restore will not work. After setting the backup flash drive location, the database is still open, exiting the app will close that connection. Again run the 'backupCFG.exe' and this time go into the 'Restore From Backup' option. You should now see what is below.



- 8- If any of those 'TRUE' are 'FALSE', your backup is bad. If that is the case, you can send the stick to us making sure you tell the salesman it is coming so they can route it to whom it should go. We can then look at the Big Daddy Bucks data and tell you if there is anyone with any balances on their cards. If you start with a fresh server drive, they will just have to re-apply when they use their old card. If they are all 'TRUE', highlight the 'Restore Files' button and press spacebar. After pressing it, the app should fairly quickly return you to the main page of the backup app. If it takes longer than 10 seconds, it probably failed. You should re-read these instructions to make sure you didn't miss one of the key steps. Any one of the steps from not unplugging the power

on the switch, not exiting the app to close database connection or doing any out of order could result in this errors.

- 9- Exit the app. Now, shutdown the progressive server. Plug the network switch back in, re-insert the USB Hasp Key and restart the server. **You should now see a progressive Grand Daddy that you had before and all the Big Daddy Bucks data should be up to date.**