



POS Box

+



ATM Installation MANUAL



Big Daddy Games LLC

733 Midway Road
Menasha, WI 54952

TEL: (920) 727-5508

www.bigdaddygames.net
sales@bigdaddygames.net

TECH-DIRECT

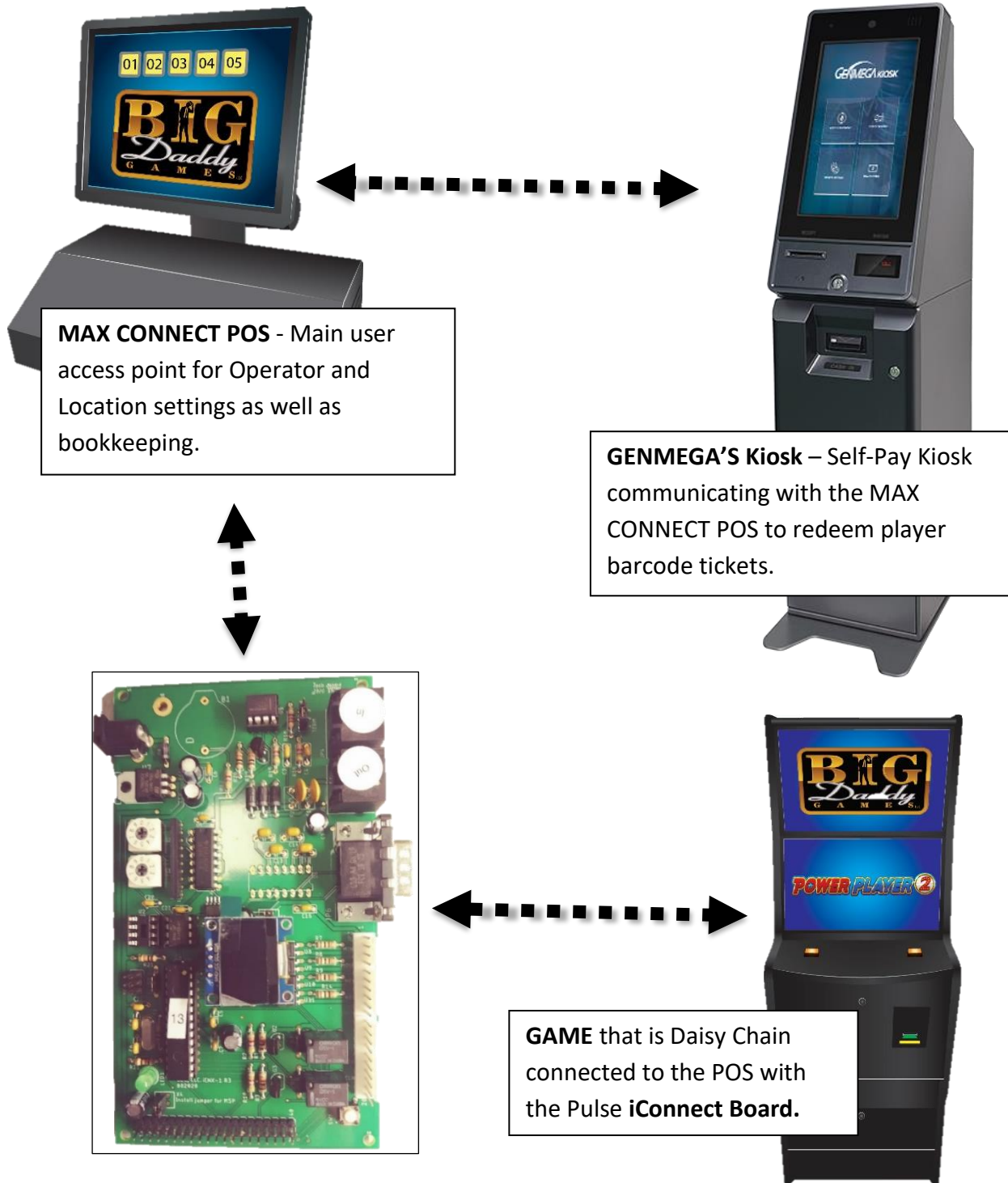
(920) 850-7409

Contents

MAX CONNECT ADVANCE System Setup Overview.....	1
Items Required for MAX CONNECT POS and GENMEGA ATM Setup.....	2
Connecting the Max Connect POS to Genmega's ATM	4
GENMEGA UK (UNIVERSAL KIOSK) SPECIFICATIONS	7
Genmega UK Devices COM Port Assignment	8
Genmega GEMINI-D Specifications.....	9
Genmega GEMINI-D Devices COM Port Assignment.....	10

GENMEGA ATM Installation

MAX CONNECT ADVANCE System Setup Overview



**MAX CONNECT is able to Daisy Chain connect up to 99 EGMS with the iConnect board.*

GENMEGA ATM Installation

Items Required for MAX CONNECT POS and GENMEGA ATM Setup

Connections in order from MAX CONNECT POS to GENMEGA ATM.

<p>STEP 1</p> <p>(1) USB to DB9 9-Pin Male RS232 cable</p>	
<p>STEP 2</p> <p>(1) DB9 Serial 9-Pin Female RS232 to RJ45 ethernet</p>	
<p>STEP 3</p> <p>(1) CAT5 ethernet cable</p>	
<p>STEPS 4 – 5</p> <p>(1) DB9 Serial 9-Pin Male RS232 to RJ45 Ethernet</p>	

GENMEGA ATM Installation

<p>STEP 6 & 8</p> <p>(1) Female-to-Female Null Modem Adapter</p>	
<p>STEP 5 – 9</p> <p>DTECH RS232 TO RS232 Isolator Kit</p> <ul style="list-style-type: none">a. (1) DTECH Isolator DT-9019b. (2) Male to Female DB9 9-pin RS232 cablesc. (1) Power Supply <p><u>OR</u></p> <p>DTECH DT-9011 Isolator</p>	

STEPS 1 – 2 and **STEPS 5 - 8** should already be completed by BDG production.

Operator should only be required to follow **STEPS 3 – 4** and **STEPS 8 – 11**.

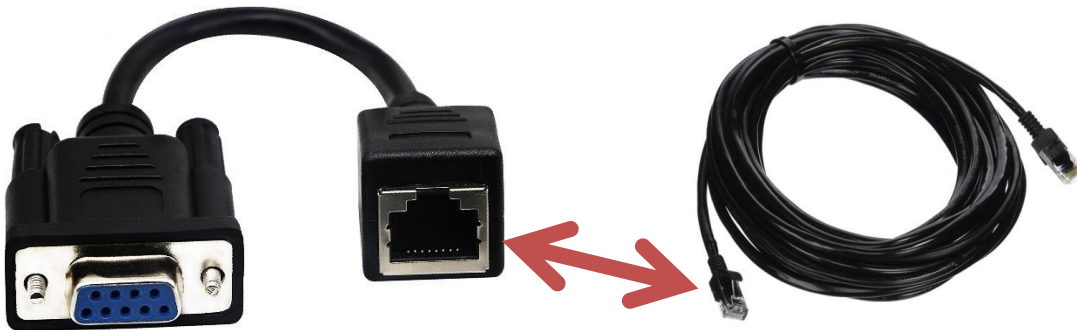
GENMEGA ATM Installation

Connecting the Max Connect POS to Genmega's ATM

1. Plug in the **USB to DB9 Male RS232 cable** in the open USB port in the Max Connect POS box.
2. Connect the **DB9 Female RS232 to RJ45 ethernet cable** with the open **DB9 Male RS232 port** above.



3. Connect the **CAT5 ethernet cable** with the open **RJ45 ethernet port** above.



4. Connect the other end of the **CAT5 ethernet cable** to the **DB9 Male RS232 to RJ45 ethernet cable**.

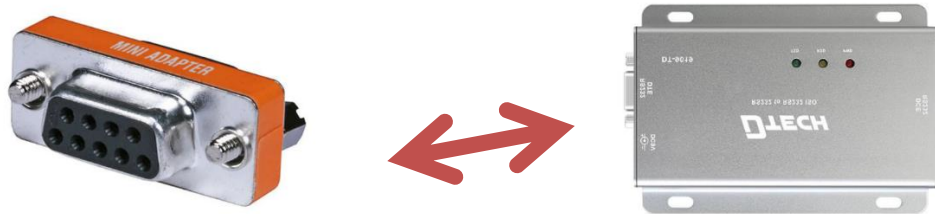


GENMEGA ATM Installation

5. Connect the **DB9 Male RS232 cable** above to the **DTECH Isolator** open Female port labeled **DTE** OR if you have **DTECH DT-9011 model**, connect to the Female port side.



6. Connect the **Female-to-Female Null Modem Adapter** to the open **DTECH Isolator** Male port side labeled **DCE** OR if you have **DTECH DT-9011 model**, connect to the Male port side.

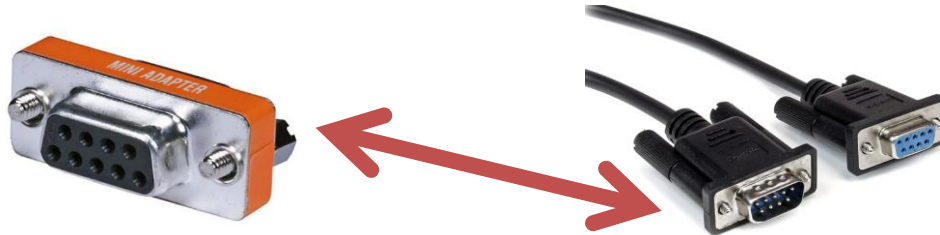


7. Plug the **DTECH Isolator Power Plug** into an open Power Source in the ATM. **PWR** should be lit **RED**. For **DTECH DT-9001 model**, no power is required.



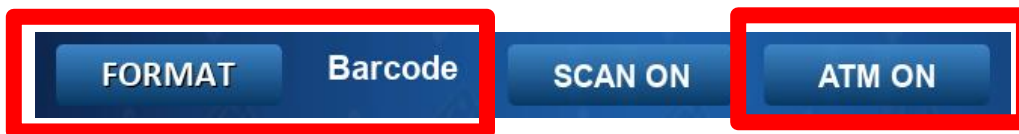
GENMEGA ATM Installation

8. Proceed if unit is Genmega UK model. Connect the **DB9 RS232 Male to Female cable** from the **Female-to-Female Null Modem Adapter** to the open ATM computer **COM8 Male port for Genmega UK**.



9. Proceed if unit is Genmega Gemini-D model. Connect the **DB9 RS232 Male to Female cable** from the **Female-to-Female Null Modem Adapter** to the open ATM computer **COM3 Male port for Genmega Gemini-D**.

10. From the POS in ADMIN PAGE 1, Change the FORMAT to BARCODE and enable the ATM to be ON.



11. The ATM Kiosk status in the top-left corner will go from OFFLINE to ONLINE.
- If ATM status does not update to ONLINE, reboot both the POS **and** ATM.

GENMEGA ATM Installation

GENMEGA UK (UNIVERSAL KIOSK) SPECIFICATIONS

Main PC Platform

- Intel i5-7500 Processor
- Windows 10 IoT Enterprise
- 250GB SSD
- TCP/IP Ethernet

Touch-Screen LCD Display

- High-Res 21.5" touch screen LCD Panel
- 1920 x 1080 full-HD resolution

Receipt Printer

- 80mm Thermal Receipt Printer
- Automatic Paper Loading and Cutting
- 40 Characters per line
- 200 DPI mono-graphic printing

Magnetic Card Reader

- DIP Type EMV card reader
- Dual side card scan (image size: 1024 x 600 (color/gray))
- Feed Speed: 450mm/sec 10%

PIN Entry Device

- 16-key Alphanumeric keypad
- PCI 3.0 certified EPP (Encrypting Pin Pad)
- Triple-DES(TDES) compliant EPP

Barcode Scanner

- 2D/1D Image Scan Module High Visibility LED Aimer

ADA

- Voice Guidance
- Lighted Transaction Guidance
- Accessible Keypad Layout

Security

- Lockable safe vault available
- Electronic Lock

Cash Dispenser

- Up to 3 x 2,000 Note Removable Cassette

Bill Acceptor

- \$1, \$5, \$10, \$20, \$50, \$100 denomination bill acceptor(s)

Camera

- Digital Full HD Camera

UPS

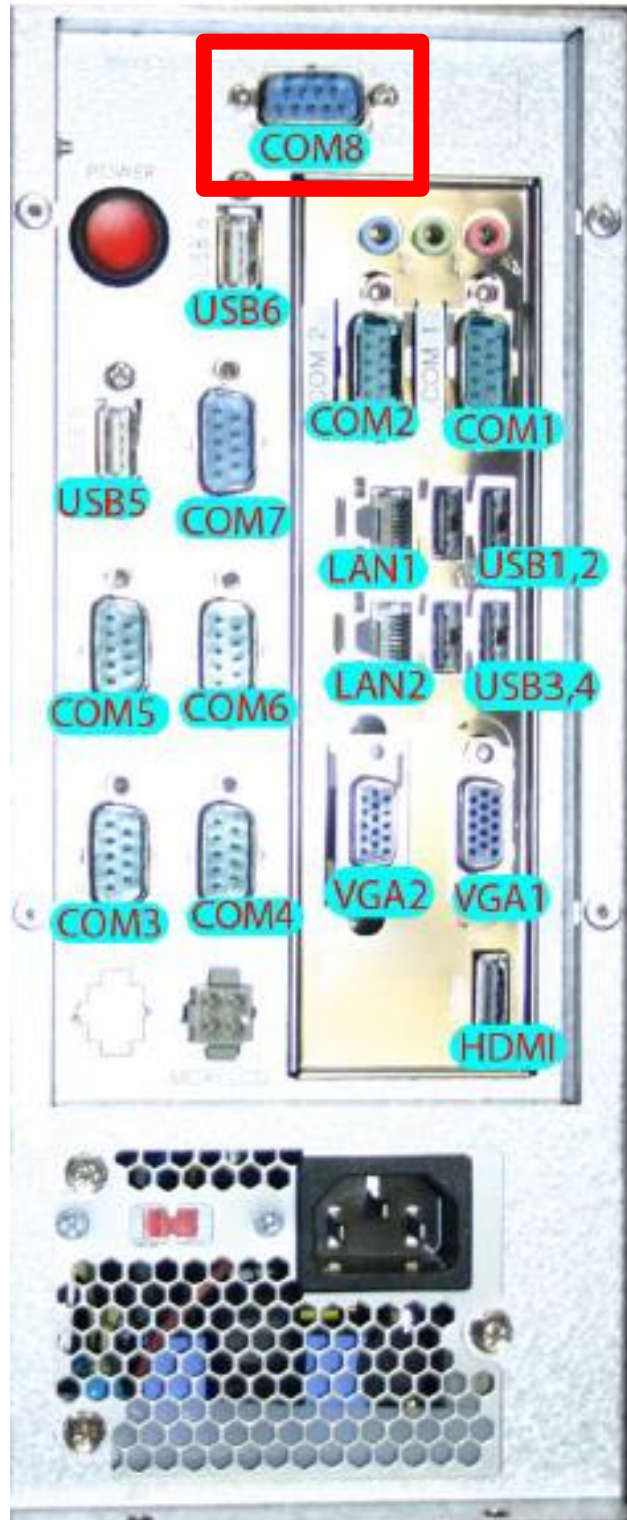
- APC350, Input 120v 50-60Hz, 210W/350VA



GENMEGA ATM Installation

Genmega UK Devices COM Port Assignment

PORT	DEVICE
COM1	MCR, EMV
COM2	EPP (PCI V3.X)
COM3	Bill Acceptor SCNXL66/83
COM4	2High HCDU
COM5	Receipt Printer
COM6	Flicker Lights #1 Receipt Printer #2 MCR #3 Cash Dispenser #4 EPP #6 Cash Light #8 Bill Acceptor Switch #1 CDU Safe #2 Top
COM7	Barcode Scanner
COM8	MAX CONNECT
USB1	HD Camera
USB2	UPS
USB3	Fingerprint Reader
USB4	Not in use (Keyboard or Mouse)
USB5	Touchscreen
USB6	Not in use (Keyboard or Mouse)



GENMEGA ATM Installation

Genmega GEMINI-D Specifications

Main PC Platform

- Intel Pentium
- Windows 10 IoT Value
- 250GB SSD
- TCP/IP Ethernet

Touch-Screen LCD Display

- High-Res 21.5" touch screen LCD Panel
- 1920 x 1080 full-HD resolution

Receipt Printer

- 80mm Thermal Receipt Printer
- Automatic Paper Loading and Cutting
- 40 Characters per line
- 200 DPI mono-graphic printing

Barcode Scanner

- 2D/1D Image Scan Module High Visibility LED Aimer

ADA

- Voice Guidance
- Lighted Transaction Guidance
- Accessible Keypad Layout

UPS (Optional)

- APC600

Camera (Optional)

- Full HD Camera

Bill Acceptor

- \$1, \$5, \$10, \$20, \$50, \$100 denomination bill acceptor(s)
- SCN serials (SCNL: 1,200 notes, SCNXL: 2,200 notes)

Security

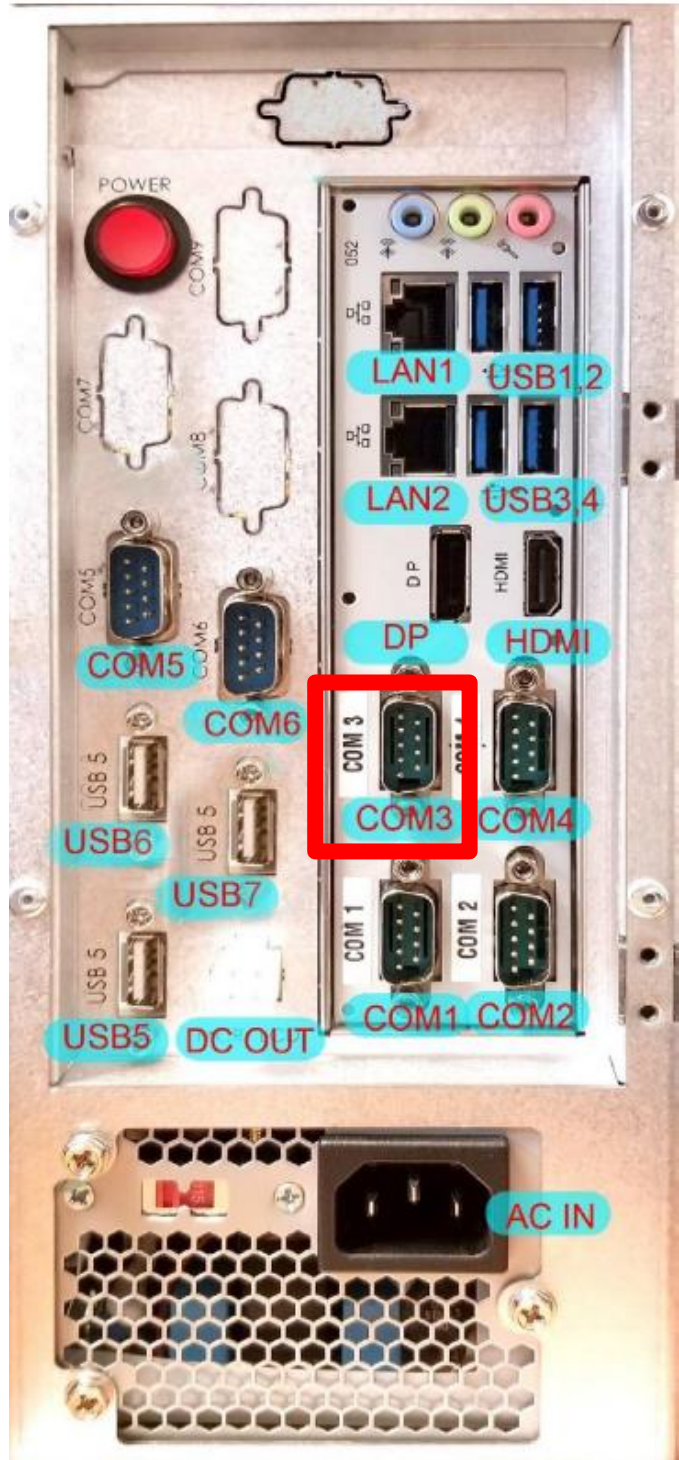
- UL-291 certificated
- Lockable safe vault available
- Electronic Lock (option. A-series / Cencon)



GENMEGA ATM Installation

Genmega GEMINI-D Devices COM Port Assignment

PORT	DEVICE
COM1	Barcode Scanner
COM2	Not in Use
COM3	MAX CONNECT
COM4	Cash Dispensing Unit (CDU)
COM5	Receipt Printer
COM6	Flicker Lights #1 Receipt Printer #2 Barcode #3 Bill Acceptor Switch #1 Bill Safe
USB1	Camera
USB2	UPS
USB3	Barcode Scanner
USB4	Touchscreen
USB5	Not in Use
USB6	Not in Use
USB7	Not in Use



Visit us at www.bigdaddygames.net for the latest and newest GAMES available for your Market!

OPERATORS LOG-IN TODAY for the latest Service Bulletin News and Software Updates!



TECH - DIRECT

920.850.7409

After Hours of Support Service Calls:

MONDAY - THURSDAY Close of business **4:15PM - 8PM**
FRIDAY Close of business **3PM - 8PM**
SATURDAY **10AM - 6PM**
SUNDAY **Noon - 4PM**
Except Holidays

Service Support during business hours
(920) 727-5508 ext. 176 OR (920) 850-7409

733 Midway Rd. Menasha, WI 54952
bigdaddygames.net

Big Daddy Games LLC



Big Daddy Games LLC
733 Midway Road
Menasha, WI 54952

TEL: (920) 727-5508

www.bigdaddygames.net
sales@bigdaddygames.net

TECH-DIRECT
(920) 850-7409