



# BIGDADDY BUCKS



## OPERATIONS MANUAL



733 Midway Road  
Menasha, WI 54952

TEL: (920) 727-5508

[www.bigdaddygames.net](http://www.bigdaddygames.net)  
[sales@bigdaddygames.net](mailto:sales@bigdaddygames.net)

**TECH-DIRECT**

920-850-7409

# Setup for New or Existing BDG Big Daddy Bucks Progressive System

## BEFORE BEGINNING...

1. If you are migrating from an older Big Daddy Bucks (BDB) Progressive System to the new BDB, Progressive System, start in **Section A** (*page 1*).
2. If you are setting up a new BDB Progressive System, start in **Section B** (*page 3*).
3. If you are restoring previous files from a backup thumb drive to a new BDB Progressive System, start in **Section C** (*page 5*).

# Section A

## Access and Record existing information

This section explains how to access and record existing information from BDB Progressive System.

- 1) Connect a keyboard to the BDB Progressive System motherboard. *\*Note: may require a reboot for the Windows OS to recognize the keyboard.*
- 2) From the main progressive screen (**Figure 1**) type in the password. BDG's default password is "null".
- 3) The MAIN OPTIONS page should appear on screen (**Figure 2**).



Figure 1

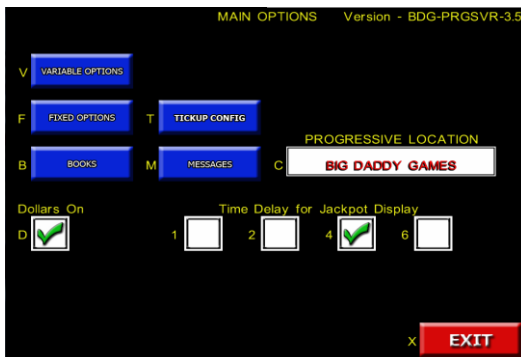


Figure 2

- 4) Press the "V" key. This will bring up the Variable Options screen (**Figure 3**). Record the Actual Jackpot Value, Jackpot Level and Jackpot Tickup Rate. Then press the "X" key to get back to the MAIN OPTIONS.

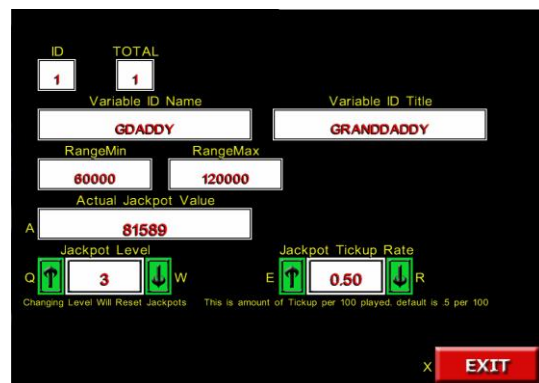
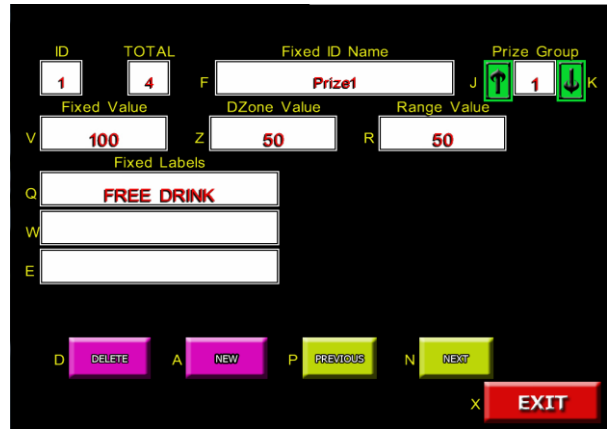


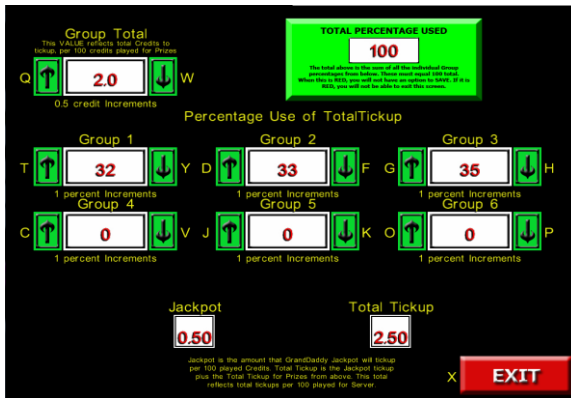
Figure 3

- 5) Press the “F” key to open the Fixed Options screen (**Figure 4**). Record the following information: ID, Fixed ID Name, Prize Group, Fixed Value, DZone Value, Range Value and the Fixed Labels for Q, W, and E boxes. If there are more than 1 prize (TOTAL), press the “N” key to move to the next prize.



**Figure 4**

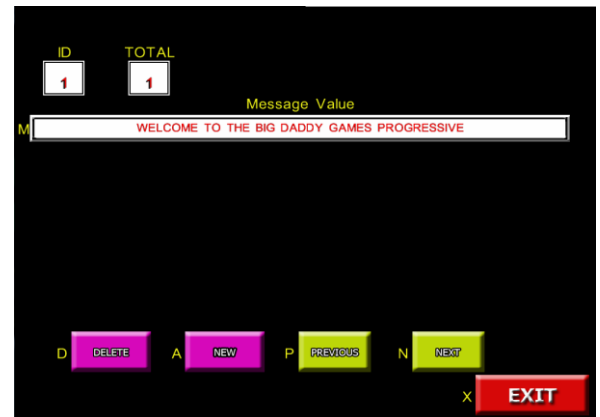
- 6) After all prizes are recorded, press the “X” key and record the next sets of information on the Tickup Config screen (**Figure 5**). Record the Group Total and the values for each of the Groups.



**Figure 5**

\*Note: Figure 5 can also be access at any time from the MAIN OPTIONS by pressing the “T” key. When ready, press the “X” key to return to MAIN OPTIONS.

- 7) Press the “M” key to get into the Messages Screen (**Figure 6**). Record each of the messages. Use the “N” and “P” keys to move through the different messages. The TOTAL box displays the total number of messages. Press “X” to back out to the main progressive screen (**Figure 1**).



**Figure 6**

- 8) Shutdown the BDB Progressive System and continue to Section B for setting up USB drive for storing Big Daddy Bucks Progressive backup files.

## Section B

### Setup USB Flash Drive to Store Backup Files

This section will explain how to setup a USB flash drive to store backup files in case the BDB Progressive System hard drive fails.

#### 1) Game Prep

- a. Place BDB Progressive hard drive and insert a Progressive w/ BDB key to BDB Progressive System motherboard.
- b. Connect a keyboard to BDB Progressive System motherboard.

#### 2) Setting Up USB Flash Drive For Storing of Backup Data.

- a. Turn on the BDB Progressive Server System and T.V. display. Once the server is up and running, the main progressive server screen should appear on the system's T.V. display (**Figure 7**).
- b. Press "ECS" key on the keyboard follow by "CTRL + ECS" and scroll down to "My Computer" to open Explorer window (**Figure 8**).



Figure 7

- c. Scroll and Highlight the Local Disk C: icon and press "Enter" to get to **Figure 9**.

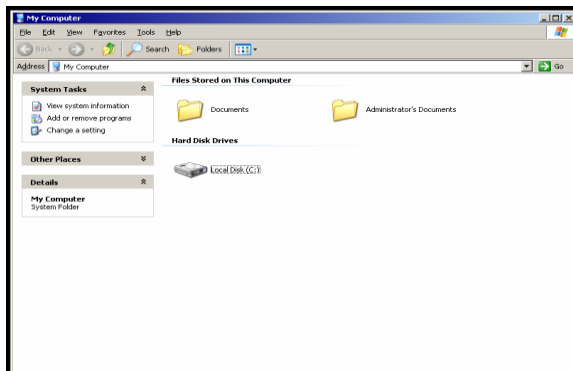


Figure 8

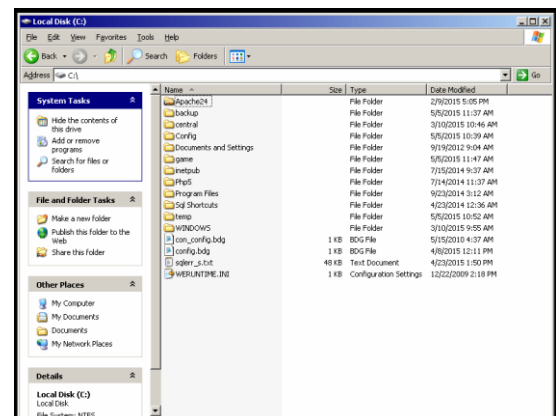
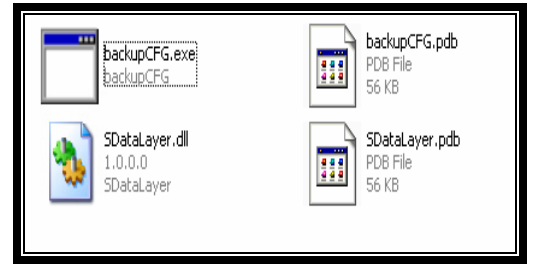
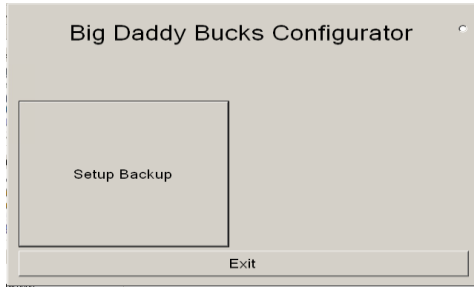


Figure 9

- d. Insert a blank USB Flash drive into an open USB slot on the BDB Progressive motherboard. Open the *Config* folder. There should be four files (**Figure 10**).
- e. Highlight the backupCFG.exe and press “Enter” and it should open the Big Daddy Bucks Configurator (**Figure 11**).



**Figure 10**

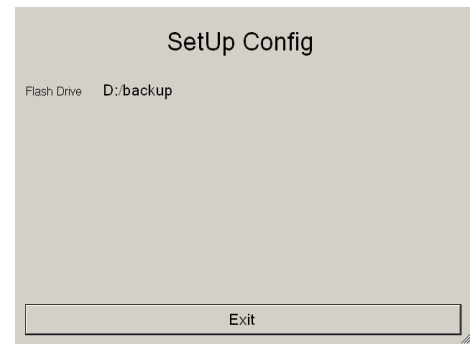


**Figure 11**

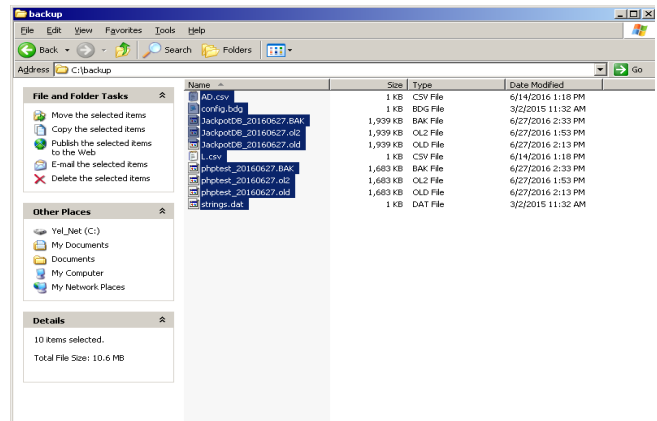
- f. Press the “Tab” key until the **Setup Backup** button is highlighted then press the Spacebar to open (**Figure 12**).

Notice **D: backup**. This confirms that the USB flash stick is the D: drive and the backups are going into the *backup* folder on this drive.

- g. Once D: backup is confirmed as the backup drive, “Tab” until the **Exit** button is highlighted then press “spacebar” to exit out of the SetUp Config window.
- h. Do the same to exit out of the Big Daddy Bucks Configurator window and then leave the backupCFG application and back to the C: drive.
- i. On the C: drive; delete all the files in the *backup* folder (**Figure 13**).
- j. Reboot the BDB Progressive System by pressing “Ctrl + Esc” to open the start menu and select Shut Down then Restart. **DO NOT JUST TURN IT OFF**, it must reboot properly.
- k. Once the BDB Progressive System is up and running see **Game Setup** section for game setup details. For detailed instructions on setting up prizes, please see **Progressive Server Manual**.



**Figure 12**



**Figure 13**



## Section C

### Restoring Big Daddy Bucks Progressive Backup Files From a USB Thumb Drive

Before previous data can be restored into the new BDB Progressive System, we need to set up the USB flash drive to be the D: backup.

#### 1) Game Prep

1. Place BDB Progressive hard and insert Progressive w/ BDB SRM key to BDB Progressive System motherboard.
2. Connect a keyboard to BDB Progressive motherboard.

#### B) Setting Up USB Flash Drive For Storing of backup data.

1. Turn on Big Daddy Buck Progressive Server.
2. Once the server is up and running, the main progressive server screen should appear on the progressive display (**Figure 14**).
3. Press “Esc” key on the keyboard follow by “Ctrl + Esc” and arrow and select “My Computer” to open Explorer window (**Figure 15**).



Figure 14

4. Scroll and highlight the Local Disk C: icon and press “Enter” (**Figure 16**).

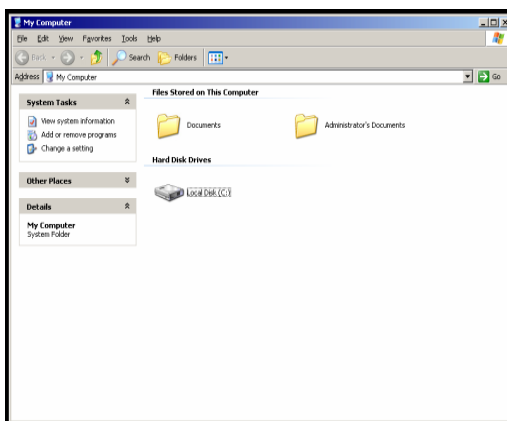


Figure 15

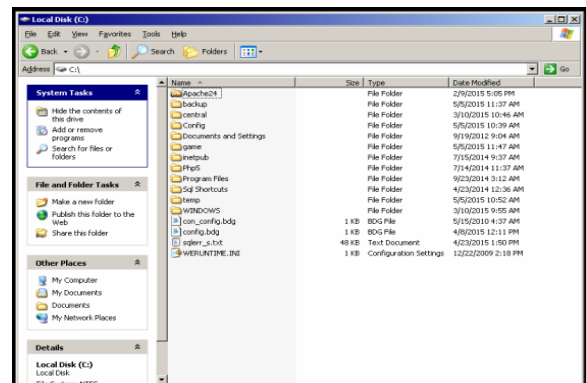
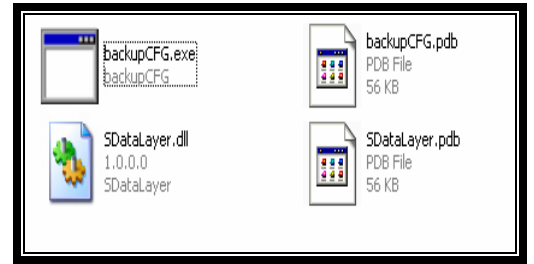
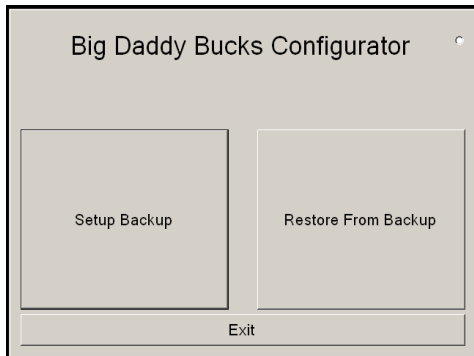


Figure 16

5. Insert the USB Flash drive with the previous data into an open USB slot on the BDB Progressive motherboard. Go into the *Config* folder. There should be four files (**Figure 17**).
6. Highlight the backupCFG.exe and press “Enter” and it should open the Big Daddy Bucks Configurator (**Figure 18**).



**Figure 177**

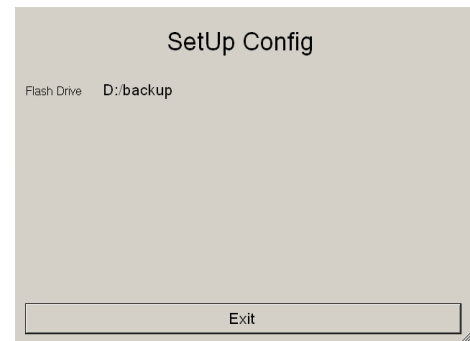


**Figure 18**

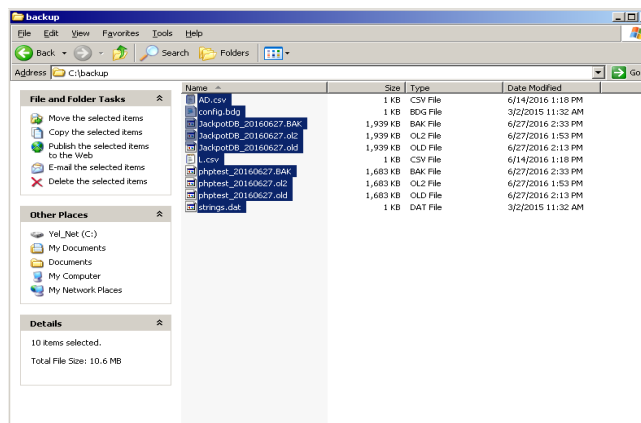
7. Press the “Tab” key until the **Setup Backup** button is highlighted then press “spacebar” to open it (**Figure 19**).

Notice **D: backup**. This confirms that the USB flash stick is the D: drive and the backups are going into the *backup* folder on this drive.

8. Once D: backup is confirmed as the backup drive, “Tab” until the **Exit** button is highlighted then press “spacebar” to exit out of the SetUp Config window.
9. Do the same to exit out of the Big Daddy Bucks Configurator window and then leave the backupCFG application and back to the C: drive.
10. On the C: drive; delete all the files in the *backup* folder (**Figure 20**).



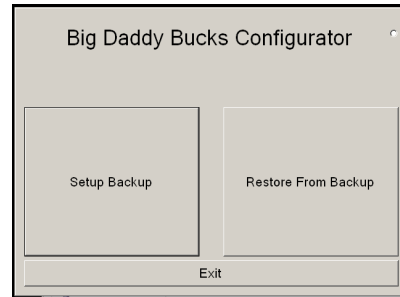
**Figure 19**



**Figure 20**



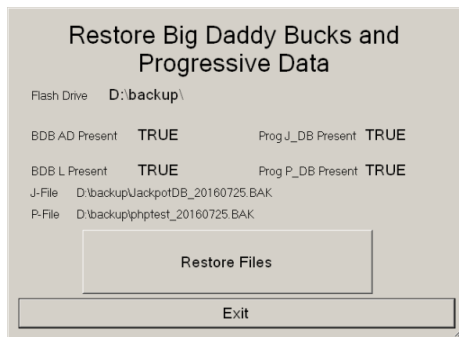
11. Back out to the Local Disk C: drive and then go back into the *Config* folder again and highlight the backupCFG.exe and press “Enter” and it should open the Big Daddy Bucks Configurator (Figure 21).



**Figure 21**

12. “Tab” until the **Restore From Backup** button is highlighted and press “spacebar” to open it (Figure 22).

Note: There must be four **TRUE**, otherwise your data are corrupted and cannot be restore.



**Figure 22**

13. “Tab” until the **Restore Files** is highlighted then press “spacebar”. This should restore your previous data into the new BDB Progressive Server System and bring you back to the Big Daddy Bucks Configurator window. At this point, exit and close down all of the windows.

14. Press “Ctrl + Esc” to open the START menu and select Shut Down and then Restart to properly reboot the BDB Progressive System. DO NOT JUST TURN IT OFF, it must reboot properly. Once the new BDB Progressive System is loaded, you should see your previous Progressive Grand Daddy that you had before and all of the Big Daddy Bucks data should be up to date.

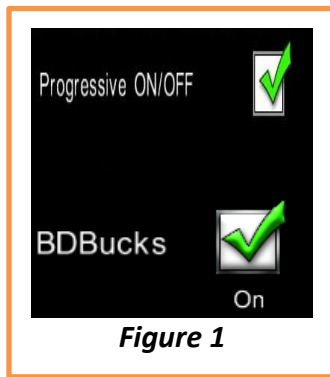
# Game Setup

## A) Game Prep

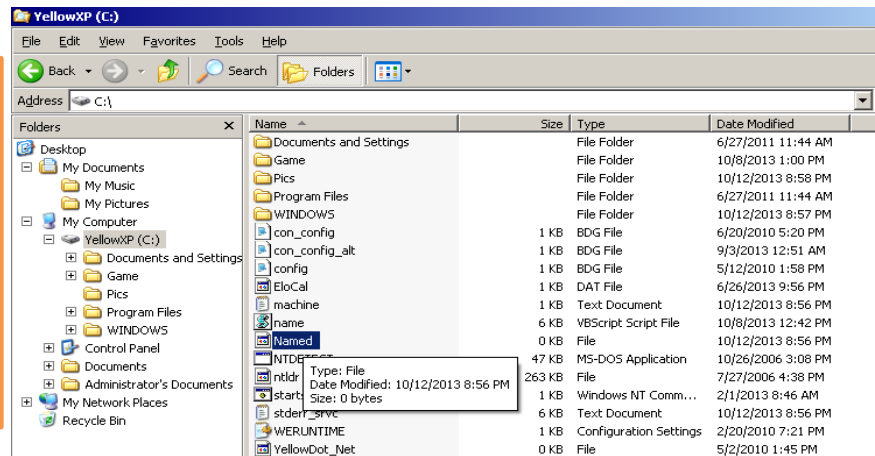
1. Do not connect network cable (CAT5) to cabinet at this point. This is an important step otherwise the result will be network collisions.
2. Place drive and insert game key.
3. Connect a keyboard to game cabinet.

## B) Setting Up Game IP Address for BDB Progressive System

1. Turn on game system. Go into setup menu (U on keyboard); turn both Progressive and BDB ON (**Figure 1**). Now launch Explorer (exit game and hit "Option" button twice and "START/STOP" button once or UUX on keyboard). Select My Computer and then C: drive. You should see **Figure 2**.



**Figure 1**



**Figure 2**

2. Select "Named" file and Delete it.
3. After Named file is deleted, reboot game by pressing "Ctrl + Esc" and select Shut Down then Restart.
4. Game should load back up to the IP GAME NAME SETUP UTILITY page (**Figure 3**). When naming, you should keep a record of these setup values for purposes of support if you need to call us.
5. Enter Game Name. When creating Game Name, do not use spaces. A standardized format is suggested (i.e. "GameXX" where XX is the game number such as 01, 02, etc.). After entering the Game Name press OK.
6. Enter IP address. Our systems are currently using network addresses in the following two subnets: 10.4.2.X and 10.4.3.X. In the IP Address box make sure you have all of your machines in the same subnet. The X number is a number between 1 and 254. For simplicity, if you named the game "Game01," then use 10.4.2.11 as your IP Address, keeping the numbers 10 and below open.
7. Select ACCEPT and game should restart. Connect network cable (CAT5).



**Figure 3**

## QUICK GUIDE

To Setup IP Address on Games:

1. From the Setup Menu *Exit Game*
2. Go to Windows Shell (menu, menu, start or uux)
3. Launch *Explorer*
4. Open *My Computer*
5. Open C: Drive
6. Select and delete **named** file
7. Reboot

IP Address examples (no spaces used):

Game01	10.4.2.11
Game02	10.4.2.12
Game03	10.4.2.13
Game04	10.4.2.14
Game05	10.4.2.15

Enter SETUP in the Big Daddy Bucks Progressive Server (while server is running) by typing in **null** to get in the options.



**Big Daddy Games LLC**

733 Midway Road  
Menasha, WI. 54952

Tel: (920) 727-5508

[www.bigdaddygames.net](http://www.bigdaddygames.net)  
[sales@bigdaddygames.net](mailto:sales@bigdaddygames.net)

**TECH DIRECT**  
(920) 850-7409